

TRENCHING DIMENSIONS

T400 ATTACHMENT

0-14"
0-40 cm
2.7"-6"
7-15 cm

T650 NARROW ATTACHMENT

0-25.5"
0-65 cm
2"-2.7"
5-7 cm

T650 WIDE ATTACHMENT

0-25.5"
0-65 cm
2.7"-6"
7-15 cm

FEATURES AND APPLICATIONS

Compact Rock saw trencher machine specially designed for fiber-optic projects in urban areas. This model features an offset digging back-end, tilting track system, and - as optional - an automatic cable laying system and an integrated back-filling system. It is remotely controlled.



UNDERGROUND POWERLINES
INSTALLATION



METROPOLITAN NETWORKS
INSTALLATION



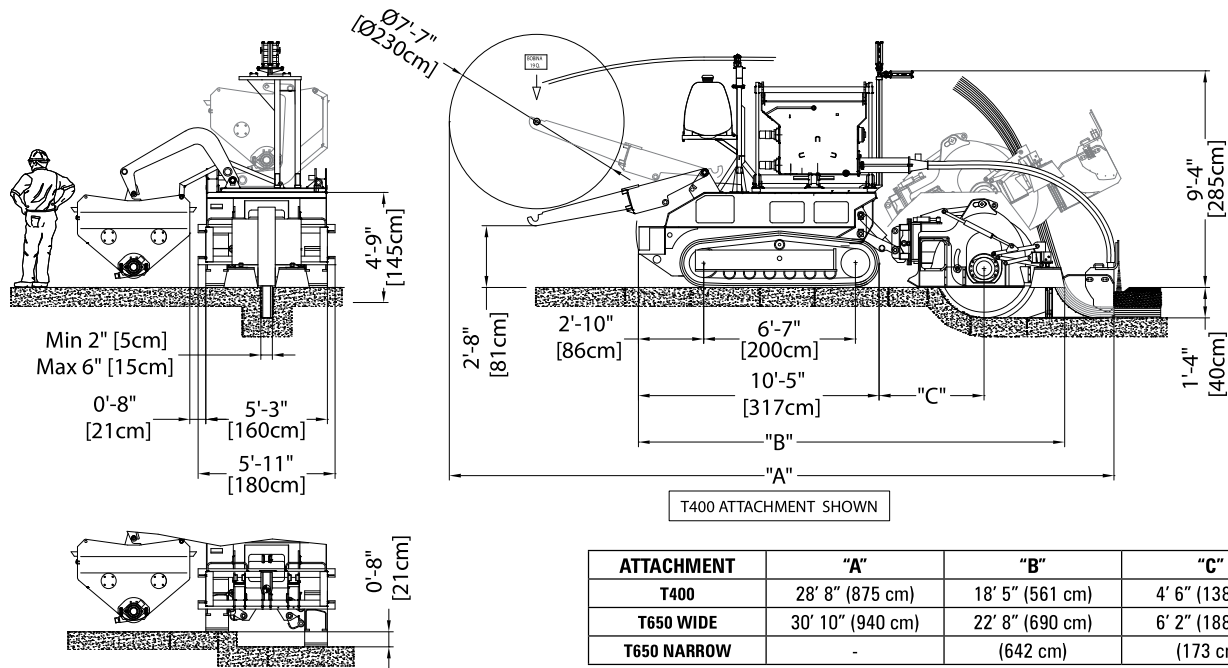
ACCESS NETWORKS INSTALLATION
(TRENCHING OR TRENCHLESS)



OPTICAL FIBER INSTALLATION



UNDERGROUND CONNECTION
NETWORKS INSTALLATION



300 ROCKSAW TECHNICAL SPECIFICATIONS

Standard Features

This system allows the operator to handle the necessary operations by remote control

The machine is equipped by variable tilt tracks (self-leveling) with a maximum range of 200 mm

Rubber track pads

Hydraulic brush system to clean the edges of the trench
Floating Rocksaw digging attachment with offset and transport tilt

Trenching Dimensions

T400 DIGGING ATTACHMENT

- Digging depth.....0-1'4" (0-40 cm)
- Digging width.....2.7'-6" (7-15 cm)

T650 NARROW DIGGING ATTACHMENT

- Digging depth.....12"-25.5" (30-65 cm)
- Digging width.....2"-2.7" (5-7 cm)

T650 WIDE DIGGING ATTACHMENT

- Digging depth.....12"-25.5" (30-65 cm)
- Digging width.....2.7'-6" (7-15 cm)

Note: ask to Tesmec Trenchers Technical Department for the max width at max depth configuration

Engine

Model.....Perkins 1104D-44T Tier 3
Max horsepower.....100 hp (74.5 kW)
Max no load rpm.....2.200 rpm
Fuel tank capacity.....31.7 gal (120 l)
Fuel consumption.....4.3 gal/hr (16 l/hr) at full load
Oil filter: full flow canister
Cooling medium liquid adequate for 115° F (46° C) ambient air temperature
Air cleaner: dry type 2 stages

Operating and Transport Weight

Weight.....19,842-22,046 lbs (9.000-10.000 kg)

Ground pressure.....10.8-12 psi (0.75-1.15 kg/cm2)

Note: dependent on configuration and options

Trencher Drive

Open circuit transmission with pressure flow power control

Radial piston fixed displacement motor

Rock wheel back-end with 13.5° pivoting system

Offset digging backend hydraulically shiftable left right 23.6" (60 cm) from center line

The combination between the tilt tracks and the offset ability allows the machine to dig near or above sidewalks and road shoulder

Crawler Drive

Dual path, hydrostatic drive, planetary transmission capable of full counter rotation

Service and parking integral brake: spring applied hydraulic release, wet disc brake

Speed range:

High range.....0-1.69 mph (0-2.7 km/h)

Low range.....0-0.11 mph (0-1.8 km/h)

Hydraulic Transmission

Open circuit, pressure and flow compensated (Load Sensing)

Main circuit pumps with power control

Main circuit max flow.....26.41 gpm (100 l/min)

Max pressure.....4351 psi (300 bar)

Service pump

Max flow.....12.7 gpm (48 l/min)

Max pressure.....2.900 psi (200 bar)

Oil tank.....31.7 gal (120 l)

Transport Dimensions

Transport dimensions with automatic laying system:

T400 ATTACHMENT

.....28' 8" x 5' 11" x 9' 4" (875 x 180 x 285 cm)

T650 NARROW ATTACHMENT

.....not available

T650 WIDE ATTACHMENT

.....30' 10" x 5' 11" x 9' 4" (940 x 180 x 285 cm)

Transport dimensions without automatic laying system and counterweight:

T400 ATTACHMENT

.....18' 5" x 5' 11" x 5' 3" (561 x 180 x 159 cm)

T650 NARROW ATTACHMENT

.....21' 1" x 5' 11" x 7' 3" (642 x 180 x 220 cm)

T650 WIDE ATTACHMENT

.....22' 8" x 5' 11" x 7' 9" (690 x 180 x 235 cm)

Available Devices

ALL005 Laying system - automatic back-filling system (only for 300 T400)

OPT002 Fuel pump kit

OPT003 Dust suppression kit

OPT004 Crumbshoe (Hydraulic) for Rocksaw attachment

OPT006 Laying system - Integrated laying box (light or heavy) with rollers kit for cables and PVC pipes

OPT007 Complete laying system - laying box (light or heavy) with reels kit and rollers kit for cables and PVC pipe

OPT015 3DGPS System for automatic machine guidance